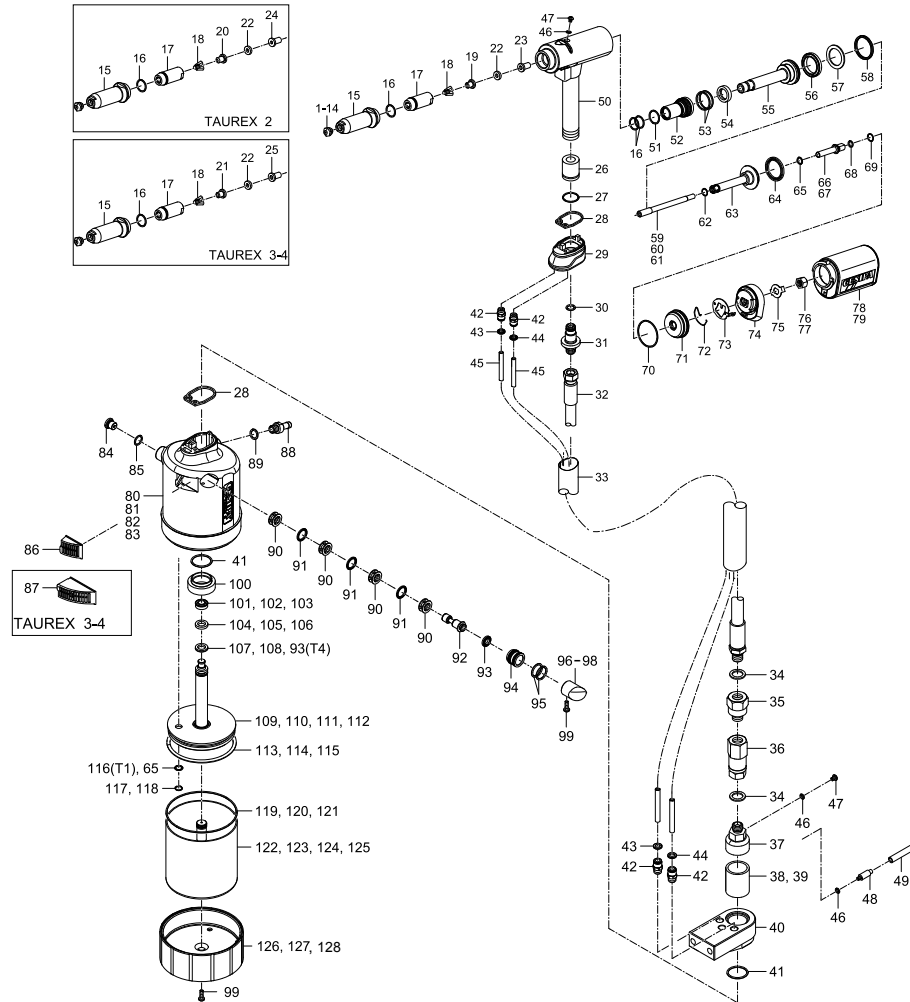


Hydro-pneumatic blind rivet setting tools

Hydro-pneumatic blind rivet setting tools

TAUREX 1-4

Exploded drawing based on TAUREX® 1.
Specifications of other models in the boxes.



TAUREX 1-4

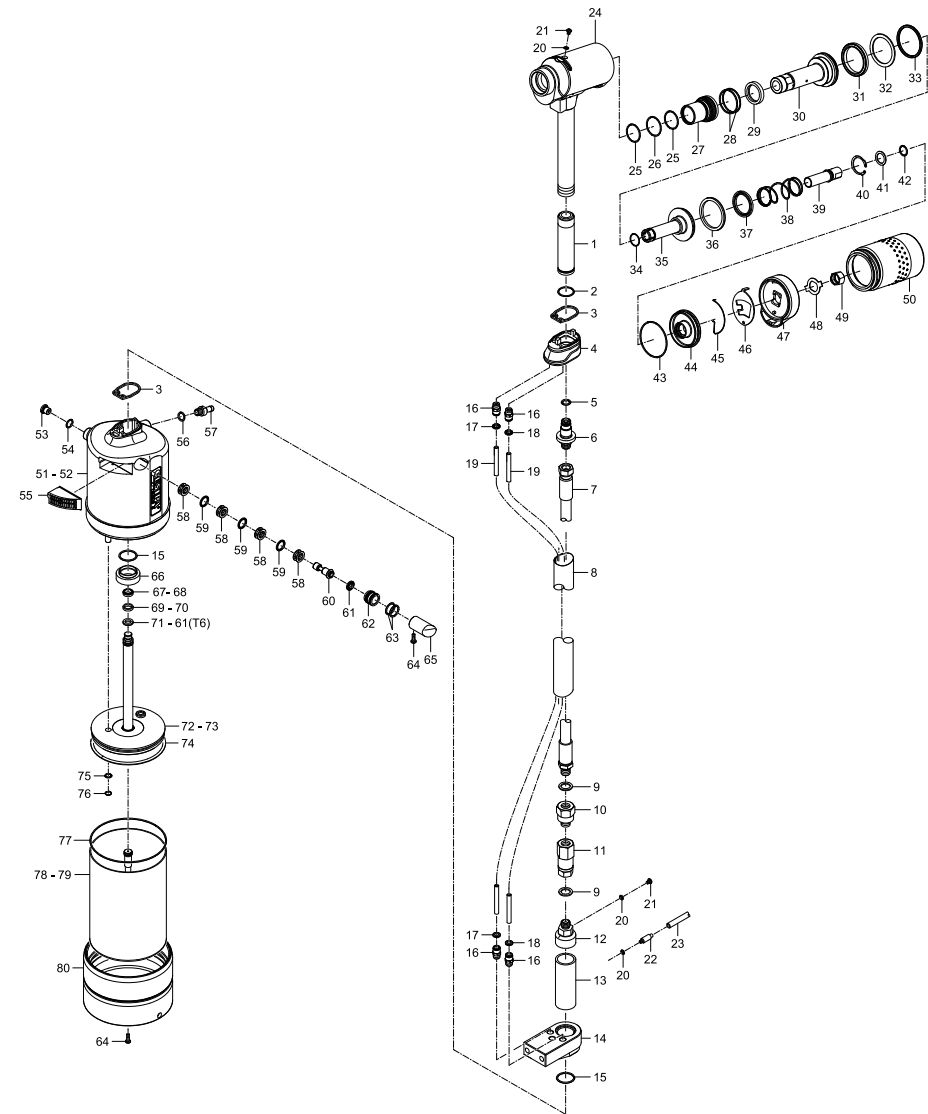
Spare part no.	TAURUS®-Type	Article no.	Designation
1		725 2075	Nosepiece 17/18
2		725 1583	Nosepiece 17/24
3		725 2040	Nosepiece 17/27
4		725 2059	Nosepiece 17/29
5		725 2067	Nosepiece 17/32
6		725 2083	Nosepiece 17/36
7		725 2560	Nosepiece 17/40
8		724 3065	Nosepiece 17/45
9		725 2202	Nosepiece 17/26BT
10		725 2210	Nosepiece 17/32BT
11		725 2229	Nosepiece 17/42BT
12		725 2237	Nosepiece 17/48BT
13		725 2250	Nosepiece 17/31MG
14		724 3146	Nosepiece 17/41MG
15		759 1010	Head 4
16 *		756 1199	O-ring
17 *		759 1009	Jaw housing 4
18 *		756 1172	Jaw 15°
19	T1	756 1058	Jaw pusher AV1
20	T2	757 1028	Jaw pusher AV2
21	T3, T4	759 1007	Jaw pusher 4
22		759 1004	Damping ring 4
23	T1	756 1060	Centre part AV1
24	T2	757 1029	Centre part AV2
25	T3, T4	759 1008	Centre part 4
26		764 1002	Standpipe
27		756 1210	O-ring
28 *		756 1024	Flat gasket 2
29		764 1003	Head adapter
30		719 0956	O-ring
31		764 1001	Hose connector
32		764 1007	Hydraulic hose
33		764 1015	Hose casing
34		764 1011	Hydraulic seal rings
35		764 1009	Plug-in coupling connector
36		764 1008	Plug-in coupling sleeve
37		764 1006	Hose connecting cylinder
38	T1, T2, T3	764 1005	Spacer tube
39	T4	767 1001	Spacer tube
40		764 1004	Cylinder adapter
41		756 1032	O-ring
42		764 1010	Screw-in connection
43		764 1012	Coding ring, green
44		764 1013	Coding ring, red
45		764 1014	PU tube
46		756 1261	Sealing ring M4
47		756 1229	Oil screw plug
48		764 1016	Filling adapter
49		764 1017	PU tube
50		756 2047	Tool head, assembled
51 *		756 1342	O-ring
52		756 2055	Seal holder, complete
53 *		715 8688	O-ring
54 *		756 1369	Rod seal
55		756 1377	Draw bar
56 *		756 1034	Supporting ring
57 *		756 1031	Piston seal
58 *		756 1385	Piston seal
59	T1	756 1156	Nozzle tube 1
60	T2	757 1020	Nozzle tube 2, long
61	T3, T4	758 1043	Nozzle tube 3, long
62		756 1997	O-ring
63		756 2063	Resetting piston, complete
64 *		756 1393	Piston seal

Spare part no.	TAURUS®-Type	Article no.	Designation
65		756 1431	Rod seal
66	T1	757 1352	Connecting piece 1
67	T2, T3, T4	757 1021	Connecting piece 2/3
68		756 1083	O-ring
69		770 2426	Snap ring
70		756 1091	O-ring
71		756 1113	End cap
72		756 1865	Retaining spring
73		756 1857	Retainer
74		756 1849	Adapter
75		757 1224	Locking washer
76	T1	757 1349	Supporting nut 1
77	T2, T3, T4	757 1022	Supporting nut 2/3
78	T1, T2	756 2020	Spent mandrel container, complete
79	T3, T4	758 1238	Spent mandrel container, complete
80	T1	764 1048	Air cylinder TAUREX 1
81	T2	765 1048	Air cylinder TAUREX 2
82	T3	766 1048	Air cylinder TAUREX 3
83	T4	767 1048	Air cylinder TAUREX 4
84		756 2136	Pressure relief valve, complete
85		756 1030	O-ring
86	T2	757 1348	Silencer 2, complete
87	T3, T4	758 1211	Silencer 3, complete
88		756 1938	Connecting nipple
89		756 1970	Sealing ring
90		756 1628	Spacer cage
91		756 1601	Rod seal
92		756 1660	Control piston
93 *		756 2012	Piston seal
94		756 1687	Piston seal
95		756 2209	O-ring
96	T1	756 1636	Stopper 1
97	T2	757 1070	Stopper 2
98	T3, T4	758 1068	Stopper 3
99		725 2032	Housing screw, short
100		756 1040	Alu nut
101 *	T1	756 1776	Piston seal
102 *	T2, T3	757 1216	Piston seal
103 *	T4	759 1014	Piston seal
104 *	T1	756 1768	Guide ring 1
105 *	T2, T3	757 1127	Guide ring 2
106 *	T4	759 1013	Guide ring 4
107 *	T1	756 1741	Piston seal
108 *	T2, T3	756 1989	Piston seal
109	T1	756 2144	Air piston 1, complete
110	T2	757 1267	Air piston 2, complete
111	T3	758 1130	Air piston 3, complete
112	T4	759 1005	Air piston 4, complete
113 *	T1	756 1806	O-ring
114 *	T2	757 1151	O-ring
115 *	T3, T4	758 1173	O-ring
116	T1	756 1784	Rod seal
117	T1	756 1792	Snap ring
118	T2, T3, T4	757 1143	V-profile ring
119	T1	756 2039	O-ring
120	T2	757 1194	O-ring
121	T3, T4	758 1157	O-ring
122	T1	756 2152	Cylinder 1, complete
123	T2	757 1275	Cylinder 2, complete
124	T3	758 1149	Cylinder 3, complete
125	T4	759 1006	Cylinder 4, complete
126	T1	756 1059	Bottom 1
127	T2	757 1011	Bottom 2
128	T3, T4	758 1017	Bottom 3

* Wearing parts

Hydro-pneumatic blind rivet setting tools

TAUREX 5-6



Hydro-pneumatic blind rivet setting tools

TAUREX 5-6

Spare part no.	TAURUS®-Type	Article no.	Designation
1		764 1002	Standpipe
2		756 1210	O-ring
3 *		756 1024	Flat gasket 2
4		764 1003	Head adapter
5		719 0956	O-ring
6		764 1001	Hose connector
7		764 1007	Hydraulic hose
8		764 1015	Hose casing
9		764 1011	Hydraulic seal rings
10		764 1009	Plug-in coupling connector
11		764 1008	Plug-in coupling sleeve
12		764 1006	Hose connecting cylinder
13		768 1001	Spacer tube
14		764 1004	Cylinder adapter
15		756 1032	O-ring
16		764 1010	Screw-in connection
17		764 1012	Coding ring, green
18		764 1013	Coding ring, red
19		764 1014	PU tube
20		756 1261	Sealing ring M4
21		756 1229	Oil screw plug
22		764 1016	Filling adapter
23		764 1017	PU tube
24		760 1042	Tool head, assembled
25		760 1024	O-ring
26 *		760 1025	O-ring
27		760 1043	Seal holder, complete
28 *		760 1027	O-ring
29 *		760 1028	Rod seal
30		760 1015	Draw bar
31 *		760 1029	Cylinder seal
32 *		760 1032	Supporting ring
33 *		760 1031	Piston seal
34		760 1026	O-ring
35		760 1044	Resetting piston, complete
36		760 1030	Lip ring
37 *		760 1033	Rod seal
38		760 1034	Spring
39		760 1009	Connecting piece
40		760 1035	V-profile ring

Spare part no.	TAURUS®-Type	Article no.	Designation
41		760 1036	Washer
42		760 1022	O-ring
43		760 1023	O-ring
44		760 1013	End cap
45		760 1020	Retaining spring
46		760 1005	Retainer
47		760 1007	Adapter
48		760 1004	Locking washer
49		760 1008	Connecting piece nut
50		760 1048	Spent mandrel container, complete
51	T5	768 1048	Air cylinder TAUREX 5
52	T6	769 1048	Air cylinder TAUREX 6
53		756 2136	Pressure relief valve, complete
54		756 1030	O-ring
55		758 1211	Silencer 3, complete
56		756 1970	Seal
57		756 1938	Connecting nipple
58		756 1628	Spacer cage
59		756 1601	Rod seal
60		756 1660	Control piston
61 *		756 2012	Piston seal
62		756 1687	Piston housing
63		756 2209	O-ring
64		725 2032	Housing screw, short
65		758 1068	Stopper 3
66		756 1040	Alu nut
67 *	T5	760 1040	Cylinder seal
68 *	T6	759 1014	Piston seal
69 *	T5	760 1019	Guide ring 5
70 *	T6	759 1013	Guide ring 4
71 *	T5	760 1039	Lip ring
72	T5	760 1047	Air piston 5, complete
73	T6	761 1006	Air piston 6, complete
74 *		758 1173	O-ring
75		756 1431	Rod seal
76		757 1143	V-profile ring
77		758 1157	O-ring
78	T5	760 1046	Cylinder 5, complete
79	T6	761 1005	Cylinder 6, complete
80		760 1006	Alu bottom

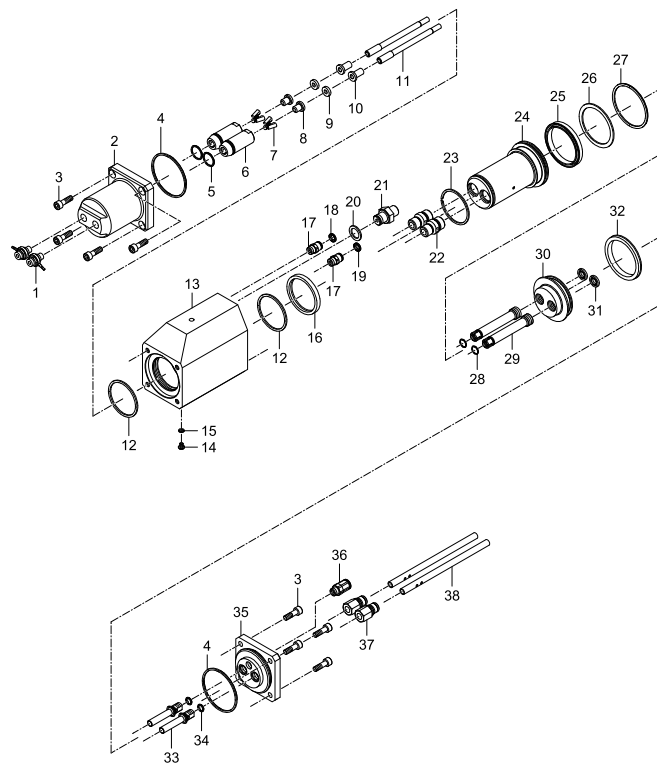
* Wearing parts

Hydro-pneumatic blind rivet setting tools

Multiple rivet head with TAUREX 5 drive

Spare part no.	Article no.	Designation
1	758 1034	Vacuum nosepiece
2	768 1006	Head
3	719 7147	Cylinder head screws
4 •	768 1011	Gasket set incl. 4, 12, 16, 25, 26, 27 and 32
5 •	756 1199	O-ring
6 •	759 1009	Jaw housing
7 •	756 1172	Jaws (3-part)
8	759 1007	Jaw pusher
9	759 1004	Damping ring
10	759 1008	Centre part
11	758 1043	Nozzle tube
13	768 1003	Housing
14	756 1229	Oil screw plug
15	756 1261	Sealing ring M4
17	764 1010	Screw-in connection
18	764 1012	Coding ring, green

Spare part no.	Article no.	Designation
19	764 1013	Coding ring, red
20	764 1011	Hydraulic seal rings
21	768 1009	Adapter
22	768 1007	Adapter
23	768 1010	Snap ring
24	768 1005	Piston
28	756 1997	O-ring
29	758 1027	Pressure pipe
30	768 1004	Piston
31	756 1431	Airzet rod seal
33	757 1021	Connecting piece
34	756 1083	O-ring
35	768 1002	End cap
36	764 1020	Screw-in connection
37	757 1347	Screw-on connector
38	757 1023	Mandrel evacuation tube



Do you already know our new one?

TAURUS® 1 Speed Rivet

The hydro-pneumatic-magazine setting tool with quick setting process and fast rates!



Available from middle of 2014

Advice and delivery time on request!

Speed riveting technology is an assembly technique that requires access from one side only and enables high rates thanks to the pre-racked rivets and the automatic feed process. This technology is used in the following industrial areas, for example: electronics, housing manufacture, household appliances, lighting, lightweight constructions, DIN connectors, diecast aluminium housings and aeronautics.

Advantages

- Quick setting process, fast rates
- Safe working through disposable mandrel and optional automatic switchoff
- Ergonomic handling for fatigue-free work
- Light and compact design
- Modular construction based on the TAURUS® design

Working range

Sets speed rivets up to Ø 4.8 mm aluminium and Ø 4.0 mm steel. Suitable for speed rivets with a mandrel length between 483 mm and 510 mm. Further lengths available on request.

Technical data

Traction power: 2,700 N
 Stroke: 26 mm
 Operating pressure: 5-7 bar
 Air hose connection: 6 mm Ø (1/4")
 Weight: 1.8 kg

Equipment

Spreader nosepiece in working position
 Tag on device head
 Rubber foot