

Hydro-pneumatic blind rivet setting tools

Hydro-pneumatic blind rivet setting tools

PH 1 and PH 2

| Spare part no. | Type | Article no. | Designation |
|----------------|------------|-------------|---------------------------------------------------------------------------------------------------------------|
| 1 | PH 1 | 717 1196 | Nosepiece 16/18 |
| 2 | PH 1, PH 2 | 717 1234 | Nosepiece 16/24 |
| 3 | PH 1, PH 2 | 717 1277 | Nosepiece 16/27 |
| 4 | PH 1, PH 2 | 717 1293 | Nosepiece 16/29 |
| 5 | PH 2 | 717 1323 | Nosepiece 16/32 |
| 6 | PH 2 | 717 1366 | Nosepiece 16/36 |
| 7 | | 710 2216 | Head |
| 8 • | PH 1 | 716 2103 | Jaw housing |
| 9 • | PH 2 | 710 2127 | Jaw housing |
| 10 • | PH 1 | 705 2057 | Jaws (2-part) |
| 11 • | | 716 1069 | Jaws (2-part) per pair with fine tooling for blind rivets with small nominal Ø (2,4, 3 and 3,2 oil materials) |
| 12 • | PH 2 | 710 2151 | Jaws (3-part) |
| 13 • | PH 1 | 716 2073 | Jaw pusher |
| 14 • | PH 2 | 717 2079 | Jaw pusher |
| 15 • | | 717 9693 | Compression spring |
| 16 | | 717 2109 | Jaw adapter |
| 17 | | 717 2117 | Nut |
| 18 • | | 717 2044 | Piston guide with wiper |
| 19 • | | 717 2133 | K seal |
| 20 | | 717 2028 | Tool head |
| 21 | | 717 2176 | Hose fitting with sealing ring |
| 22 • | | 717 2141 | K seal |
| 23 | | 717 2125 | Piston |
| 24 • | | 717 2192 | K seal |
| 25 | | 717 2184 | Sealing ring holder |
| 26 | | 717 2656 | Tool head assembly (18-25) |
| 27 • | | 717 2168 | Return spring |

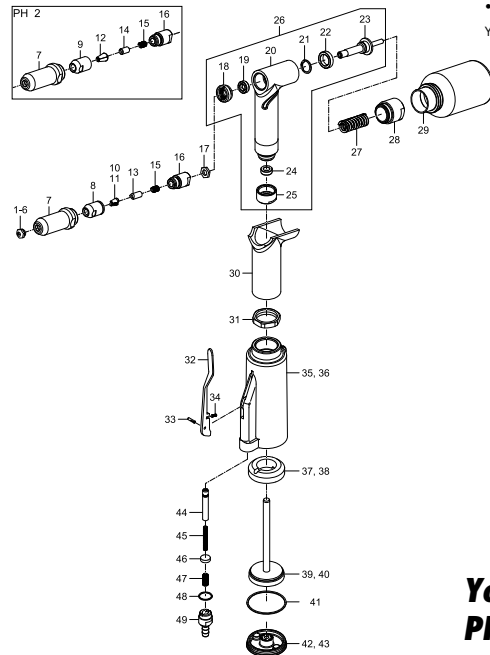
| Spare part no. | Type | Article no. | Designation |
|----------------|------|-------------|----------------------------------------------------------------|
| 27 • | | 717 2168 | Return spring |
| 28 | | 717 2206 | Closure screw |
| 29 | | 717 1722 | Spent mandrel container |
| 30 | | 717 2621 | Plastic grip |
| 31 | | 717 2449 | Locking nut |
| 32 | | 717 2311 | Release lever |
| 33 | | 717 2338 | Grooved pin |
| 34 | | 717 2346 | Compression spring |
| 35 | PH 1 | 716 2111 | Tool body |
| 36 | PH 2 | 717 2257 | Tool body |
| 37 | PH 1 | 716 2421 | Buffer ring |
| 38 | PH 2 | 717 2427 | Buffer ring |
| 39 | PH 1 | 716 2618 | Air piston, complete |
| 40 | PH 2 | 717 2613 | Air piston, complete |
| 41 • | | 717 2362 | Round cord packing ring |
| 42 | PH 1 | 716 2332 | End cap complete |
| 43 | PH 2 | 717 2354 | End cap complete |
| 44 | | 717 2281 | Valve tube |
| 45 | | 717 2303 | Valve spring |
| 46 • | | 717 2273 | Valve spud |
| 47 • | | 717 2087 | Compression spring |
| 48 | | 728 2311 | Dichtungsrin Sealing ring g |
| 49 | | 717 2265 | Hose fitting with sealing ring |
| | | 728 4705 | Jaw pusher with reducing tube for thin mandrels Ø up to 2.3 mm |
| | | 728 5701 | Jaw pusher with reducing tube for thin mandrels Ø up to 2.3 mm |
| | | 717 1757 | Hydraulic oil (1 bottle) 250 cm ³ |
| | | 717 1773 | Universal wrench MSU |

PH 1-L

| Spare part no. | Article no. | Designation |
|----------------|-------------|-------------------------|
| 1 | 716 3002 | Tool head |
| 2 | 716 3010 | Head |
| 3 | 716 3029 | Jaw housing |
| 4 | 716 3037 | Piston |
| 105 • | 716 3274 | Jaw pusher |
| 106 | 716 3282 | Nozzle tube |
| 107 | 716 3347 | Closure screw |
| 8 A | 716 3266 | Connector |
| 109 | 716 3290 | Tool body |
| 10 | 716 3118 | Sealing ring holder |
| 13 • | 716 1069 | Jaws (2-part) |
| 114 A | 705 1182 | Nosepiece 10/18 |
| 114 B | 705 1247 | Nosepiece 10/24 |
| 114 C | 705 1271 | Nosepiece 10/27 |
| 15 | 717 2486 | Piston guide with wiper |
| 16 • | 717 2567 | Rod seal |
| 117 • | 719 2568 | O-ring |
| 18 • | 716 3142 | O-ring |
| 19 • | 716 3150 | O-ring |
| 20 • | 716 3169 | O-ring |
| 121 • | 716 3304 | O-ring |
| 22 • | 716 3185 | O-ring |
| 23 • | 715 8750 | O-ring |
| 24 • | 716 3193 | O-ring |
| 125 | 716 3312 | Valve body |
| 126 | 716 3320 | Valve screw |

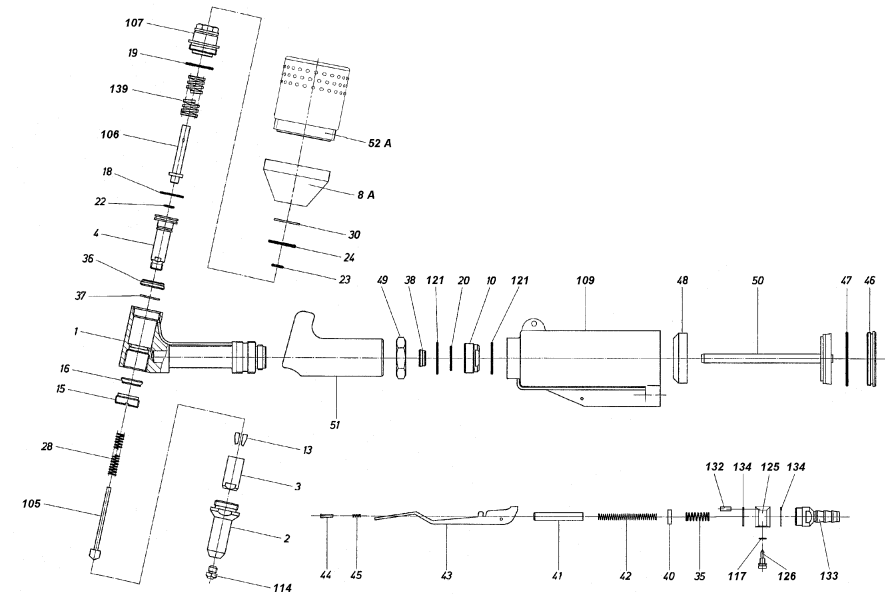
| Spare part no. | Article no. | Designation |
|----------------|-------------|-----------------------------------|
| 28 | 705 4076 | Compression spring |
| 30 | 716 3215 | Snap ring |
| 132 | 716 3339 | Plastic tube |
| 133 | 728 2192 | Connecting nipple |
| 134 • | 728 2311 | Sealing ring |
| 35 • | 717 2087 | Compression spring |
| 36 • | 717 2141 | K seal |
| 37 | 717 2176 | Snap ring |
| 38 • | 717 2192 | K seal |
| 139 | 717 2168 | Return spring |
| 40 | 717 2273 | Valve spud |
| 41 | 717 2281 | Valve tube |
| 42 | 717 2303 | Valve spring |
| 43 | 716 3223 | Release lever |
| 44 | 717 2338 | Grooved pin |
| 45 | 717 2346 | Compression spring |
| 46 | 716 3231 | End cap complete PH 1 |
| 47 • | 717 2362 | Round cord packing ring |
| 48 | 716 2421 | Buffer ring |
| 49 | 716 3258 | Locking nut |
| 50 | 716 2618 | Air piston, complete |
| 51 | 717 2621 | Plastic grip |
| 52 A | 725 9282 | Spent mandrel container, complete |

• Wearing parts



• Wearing parts

You will find detailed nosepiece allocation tables on page 42 - 46.



You will find spare part kits for PH 1 and PH 2 on page 63.